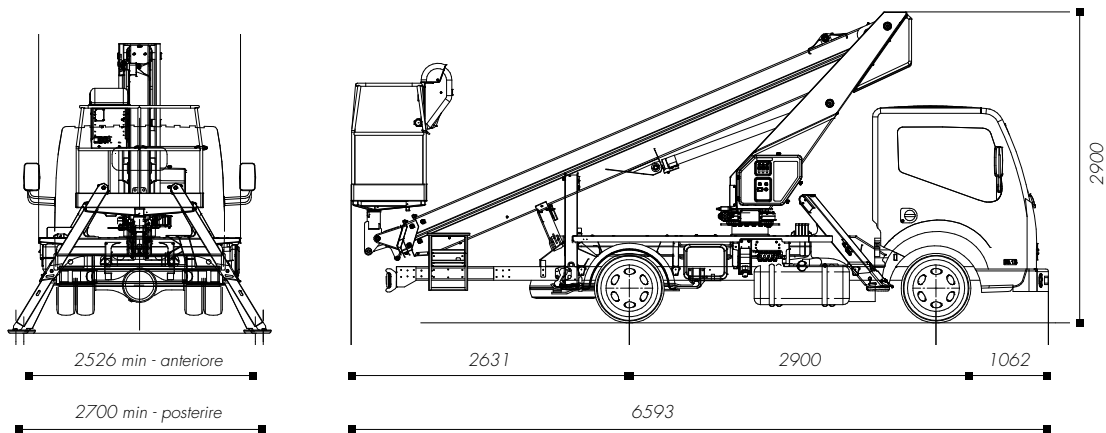


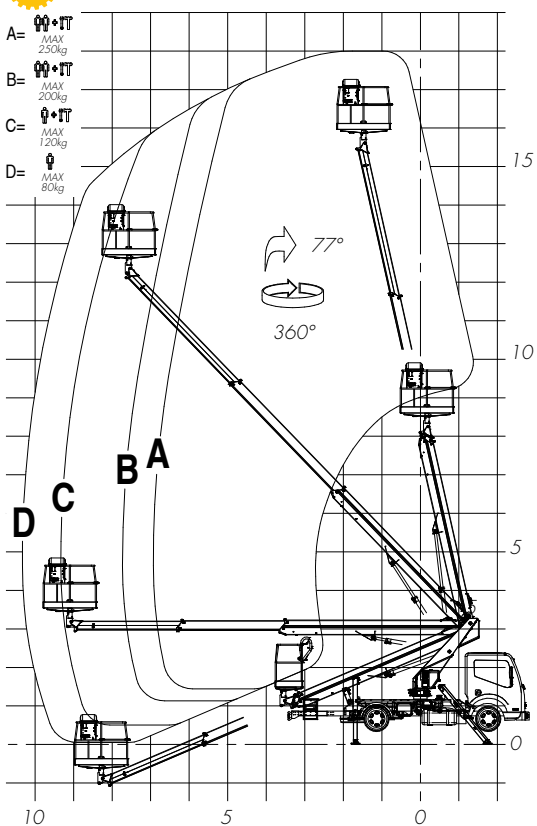




## DIMENSIONI / OVERALL DIMENSION / GESAMTABMESSUNGEN [mm]



## DIAGRAMMA DI LAVORO / WORKING DIAGRAM / ARBEITSDIAGRAMM [m]



CARATTERISTICHE TECNICHE / TECHNICAL FEATURES / TECHNISCHE EIGENSCHAFTEN

|  |  |   |
|--|--|---|
|  | <b>Altezza max. di lavoro</b><br>Max. working height<br>Max. Arbeitshöhe         | 22,6 m  |
|  | <b>Sbraccio max. di lavoro</b><br>Max. working boom extension<br>Max. Reichweite | 14 m  |
|  | <b>Portata</b><br>Capacity<br>Traglast   | 250 Kg  |
|  | <b>Altezza piano calpestio</b><br>Walk-on surface height<br>Korbodenhöhe         | 20,6 m  |
|  | <b>Rotazione sovrastruttura</b><br>Upperstructure rotation<br>Drehung Oberwagen  | 400°  |
|  | <b>Cesta</b><br>Basket<br>Arbeitskorb  | Alluminio 1400x715x1100 mm<br>Aluminium 1400x715x1100 mm                                    |
|  | <b>Rotazione cesta</b><br>Basket rotation<br>Korb-schwenkung                     | + 90° dx + 90° sx<br>+ 90° R.-H. + 90° L.-H.<br>Hydraulisch                                 |
|  | <b>Stabilizzatori</b><br>Outriggers<br>Abstützungen                              | HE+HE   |
|  | <b>Comandi</b><br>Controls<br>Steuerungen  | Elettro idraulici in can bus<br>Electro-hydraulic controls in can bus<br>Elektrohydraulisch |